

nobilia[®]

New features journal Collection 2023



NEW FEATURES 2023
KITCHEN, BATHROOM
AND LIVING AREA





INNOVATIONS. TRENDS. IMPULSES IN 2023.

“My world. My home.” – our new features for 2023 meet these demands in an especially modern way. Because this year, our collection is aligned particularly with the individualism of tomorrow. Our new grid represents optimised and flexible ergonomics and storage solutions for planning and design: our grid enables a new level of consistency in layout alignment.

Plenty of input for creative and individual solutions also offer new fronts, exciting decoration and colours as well as innovative elements for the kitchen, bathroom and living room; an extensive, exclusive assortment of items, including.



10 **nobilis**
YEAR
GOODWILL

TWICE THE COMMITMENT

A feeling of trust is worth a lot. The consistently high quality of our furniture has always been the foundation for accommodating business partnerships. In order to improve support for our sales partners, we have now decided to increase the period we offer our goodwill-based services from 5 to 10 years. Good to know: This comprehensive service applies to all of the kitchen, bathroom and living room furniture we produce.

04

Fronts

32

New kitchen features

46

Sinks and taps

20

Handles and worktops

38

Black Edition

52

New living features

24

Upright panels and niches

40

Sign Emotion

64

New bathroom features

26

Grid and system heights

42

Electric appliances

74

Discontinued products

MORE INDIVIDUALITY

Time for a new look and a special tactile feeling. Fronts and décors now create a more natural look in the kitchen thanks to warm colours and wood and basalt designs. Quality that is made for everyday life: Surfaces like Senso and Easytouch are attractive thanks to the anti-fingerprint coating and a pleasant feeling, while StoneArt proves to be especially robust.



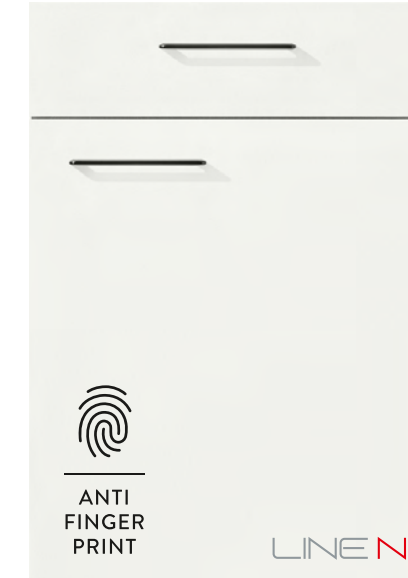
SIX NEW FRONTS



Range no. 371

RIVA 843 PG 2
Bergamo oak reproduction

Matching surround:
Upright panels, worktop, shelf units,
plinth



Range no. 357

SENSO 488 PG 3
Lacquer, premium honed white

Matching surround:
Upright panels



Range no. 945

EASYTOUCH 968 PG 4
Lacquered laminate, white ultramatt

Matching surround:
Upright panels, bevelled shelf unit



Range no. 945

EASYTOUCH 970 PG 4
Lacquered laminate,
taupe grey ultramatt

Matching surround:
Upright panels, bevelled shelf units,
plinth



Range no. 566

STONEART 305 PG 4
Taupe grey basalt reproduction

Matching surround:
Upright panels, Xtra worktop, plinth



Range no. 684

CASCADA 778 PG 7
Lacquered laminate, fjord blue

Matching surround:
Upright panels, pilasters units, plinth

AUTHENTIC OAK PATTERN

Natural looks are a trend in interior design. A good reason to add another wood design to the successful Riva: the new Bergamo oak. Its light grey component, vertical gradient, simple grain, and the authentic tactile feeling make it unmistakable. Styling tip: Bergamo oak harmonises perfectly with our new features in taupe grey and basalt, but it also matches perfectly with the new ultramatt Easytouch surface in white.

RIVA 843
Bergamo oak reproduction

CARCASE 194 / 089
Slate grey / Stone grey

LINE N RECESSED HANDLE 011
Slate grey

WORKTOP 363
Taupe grey basalt reproduction
(Xtra Slim Line)



Range no. 371

RIVA 843
Bergamo oak reproduction

PG 2

Matching surround:
Upright panels, worktop, shelf units,
plinth



LINE N XL

WHITE IS EXCITING

It's trendy! Senso in premium matt makes the difference and sets itself apart completely from other surfaces in terms of look and feel. The special anti-fingerprint coating of this lacquered front reduces annoying fingerprints, which helps reduce cleaning effort. The velvety-warm surface invites users to experience the feeling of touch.

SENSO 488

Lacquer, premium honed white

CARCASE 106

White

LINE N RECESSED HANDLE 002

Stainless steel finish

WORKTOP 363

Taupe grey basalt reproduction (Xtra)

Range no. 357

SENSO 488

Lacquer, premium honed white

PG 3

Matching surround:
Upright panels



ANTI
FINGER
PRINT

LINE N

Attractive all-around!

- Less cleaning effort thanks to anti-fingerprint coating
- Resistant to conventional stains
- Insensitive to many cleaners
- Resistant to heat and moisture
- Resistant to micro-scratches, which can also result during cleaning



LINE N

FRESH WHITE

White kitchens are among our most popular classics. They can be combined diversely and restyled again and again. New: the ultramatt Easytouch in clear white. The proven anti-fingerprint coating makes it unbelievably easy to care for, simple to clean, and robust against a number of different substances.

EASYTOUCH 968
Lacquered laminate,
white ultramatt

CARCASE 106 / 127
White / Black

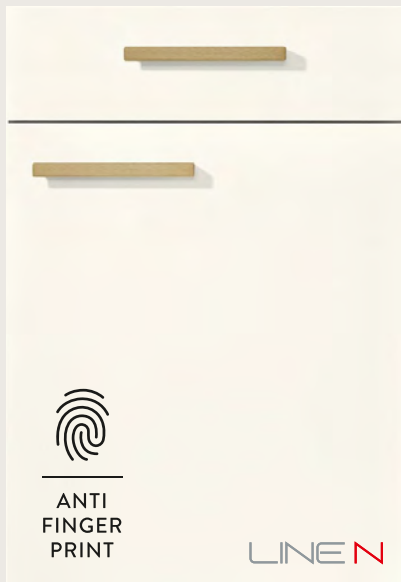
SCREW-ON BAR HANDLE 820
Black

WORKTOP 235
Venato Bianco marble
reproduction

Range no. 945

EASYTOUCH 968 PG 4
Lacquered laminate, white ultramatt

Matching surround:
Upright panels, bevelled shelf unit



EASYTOUCH 963
Rust red ultramatt

EASYTOUCH 967
Alpine white ultramatt

EASYTOUCH 969
Sand ultramatt

EASYTOUCH 966
Fjord blue ultramatt

EASYTOUCH 970
Taupe grey ultramatt

EASYTOUCH 964
Mineral green ultramatt

EASYTOUCH 961
Graphite black ultramatt



TREND COLOUR TAUPE GREY

Grey nuances continue to set the mood in interior design. New with Easytouch: Taupe grey – a warm grey with a light grey component, subtle but possessing an impressive effect. As a neutral colour, taupe grey creates a relaxing and calming ambience and represents a modern, very elegant look.

EASYTOUCH 970
Lacquered laminate,
taupe grey ultramatt

CARCASE 089
Stone grey

LINE N RECESSED HANDLE 009
Stone grey

WORKTOP 363
Taupe grey basalt reproduction (Xtra)

Range no. 945

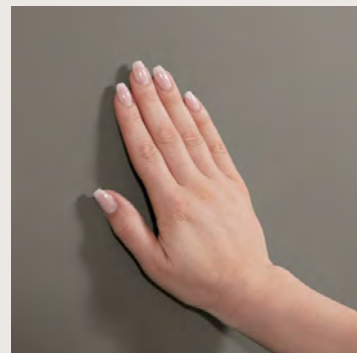
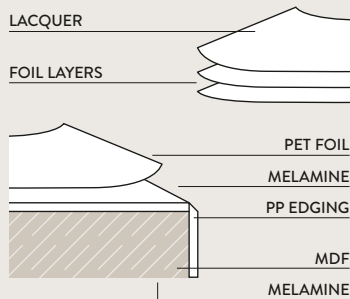
EASYTOUCH 970
Lacquered laminate,
taupe grey ultramatt

PG 4

Matching surround:
Upright panels, bevelled shelf units,
plinth



- Ultramatt with PP edging on all sides
- Extremely resilient
- Outstanding care properties thanks to the innovative anti-fingerprint coating
- Wear-resistant and highly cross-linked functional layer



LINE N XL



A STRONG TEXTURE

Robust but with great looks: Taupe grey basalt completes our StoneArt range of coating materials and is attractive thanks to its depth, authentic surface texture, which is reminiscent of real stone. StoneArt is especially resistant to scratches and impacts thanks to the high-quality laminate and excels overall in daily use with its strong durability. The taupe grey basalt décor is also available as an Xtra worktop and is the perfect colour match to the new Easytouch in taupe grey.

STONEART 305
Taupe grey basalt reproduction

CARCASE 089
Stone grey

LINE N RECESSED HANDLE 002
Stainless steel finish

WORKTOP 363
Taupe grey basalt reproduction (Xtra)

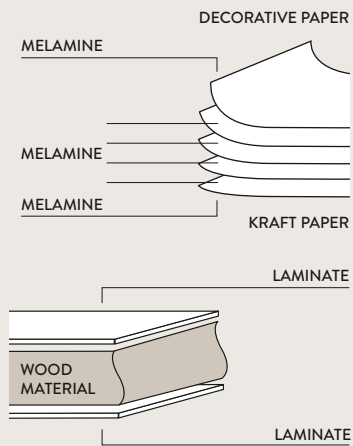


Range no. 566

STONEART 305 PG 4
Taupe grey basalt reproduction

Matching surround:
Upright panels, Xtra worktops, plinth

- Extremely resilient
- The surface features multiple layers and is therefore thicker than the melamine front
- More robust than melamine fronts
- Easy-care



LINE N

CALM BLUE

Our Cascada cottage style receives an update with the Nordic-inspired fjord blue. This colour already celebrated its successful début last year with Easytouch. With its calming effect, fjord blue is a rich new addition to the cottage style segment. An advantage for planning: complete colour looks and modern combinations comprising frame fronts and straight fronts are now easy to implement. The perfect addition: Pilasters and crowns that integrate harmonically and set stylish accents.

CASCADA 778
Lacquered laminate, fjord blue

CARCASE 127
Black

METAL HANDLE 251
Black

WORKTOP 787
Stone Oak reproduction
(Xtra Ceramic)

Range no. 684

CASCADA 778 PG 7
Lacquered laminate, fjord blue

Matching surround:
Upright panels, pilasters units, plinth



CASCADA 774
Lacquered laminate, white



CASCADA 772
Lacquered laminate, stone grey



CASCADA 776
Lacquered laminate, reed green



CASCADA 778
Lacquered laminate, fjord blue





SURROUND DESIGN ADDITIONS TO THE COTTAGE STYLE SEGMENT

More fashionable than ever – our cottage style segment offers a wide range of options for modern living.



New cottage style colour fjord blue

Available pilaster colours for Cascada

778 Lacquered laminate, fjord blue

Available KLHC- / LB colours for Cascada

212 Fjord blue



New grid for cottage style

The 2023 collection includes the new grid-line layout, which is available throughout with our cottage style fronts. A big advantage: frame fronts and straight fronts may now be easily combined for perfect planning and harmonic line layout.

—
On 01/10/2022 the York 985, Chalet 977 and Castello 224 ranges will be expanded with the following units:

- Base and tall units in front design 720
- Base and tall units in all XL heights
- 1200 mm wide extension width
- Wall unit with swivel flap doors, folding lifting doors and sliding doors



New design elements

- Cottage-style wall shelf unit with plate rack
- 2 fixed shelves
- 1 plate rack in oak veneer
- 2 finished pilasters

—
Width: 600 mm

Heights: 720 mm, 792 mm, 864 mm

GET A HANDLE ON EVERYTHING: SEVEN NEW HANDLES



469 METAL HANDLE
Brushed anthracite
160 mm



233 METAL HANDLE
Gold-coloured
160 mm



251 METAL HANDLE
Black
160 mm



745 WOODEN HANDLE (MP 7945)
Oak
160 mm



250 BOW HANDLE (MP 7945)
Black
160 mm



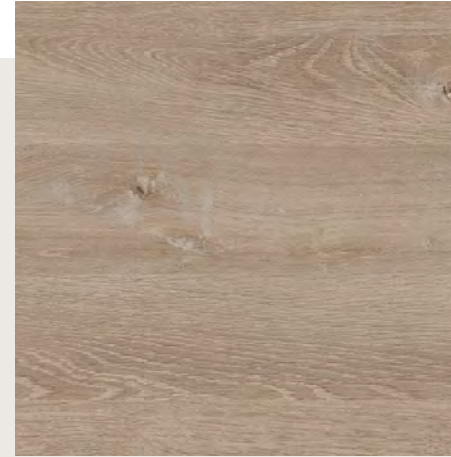
811 METAL HANDLE (MP 7945)
Black
96 mm



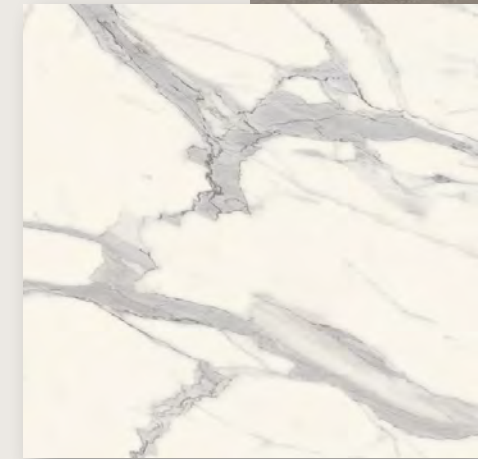
820 SCREW-ON BAR HANDLE (MP 7945)
Black

MORE ELEGANT WORK: THREE NEW WORKTOP DÉCORS

More design options! We will expand our worktops with three new décors that can be combined optimally with all existing designs.



01.
—
WORKTOP DÉCOR 231
Bergamo oak
reproduction
—
38 / 100 mm



02.
—
WORKTOP DÉCOR 235
Venato Bianco marble
reproduction
—
38 / 100 mm



03.
—
WORKTOP DÉCOR 363
Taupe grey basalt
reproduction (Xtra)
—
16 / 38 / 100 mm



XTRA CERAMIC WORKTOPS

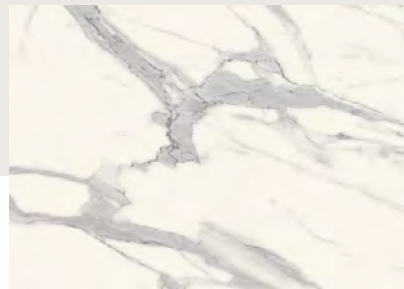
A trend material for kitchens and bathrooms: Our patented Xtra Ceramic worktops are attractive thanks to their natural appearance and exceptional usability. The Xtra Ceramic worktop is produced with an innovative sandwich structure. The overall 16 millimetre thick worktop consists of 6 mm of solid ceramic material on a 10 millimetre lightweight backing layer of recycled glass. In addition, the worktops and niche claddings have impact-resistant design edges.

More selections with 5 new décors: Xtra Ceramic is now available in ten décors, perfectly combinable with our existing colour palette. Just like with our Xtra worktops, Xtra Ceramic also enables flush-mounted installation of hot plates and built-in sinks.



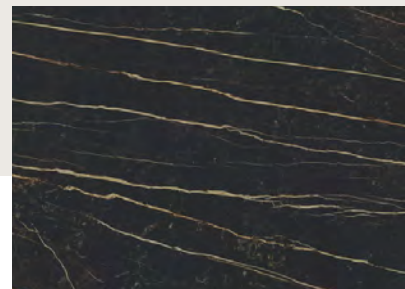
Convincing arguments for Xtra Ceramic:

- Strong quality – thanks to a genuine ceramic layer
- High-quality visual – scratch-resistant surface with cool look
- Special aesthetic qualities and pleasant feel – perfect for kitchens and bathrooms
- Absolutely waterproof – even without waterproofing
- Hygienic surface – non-porous and particularly easy to maintain
- Totally impervious – stains don't have a chance
- Everyday toughness – insensitive to impacts
- Heat-resistant – optimal for kitchen use
- Flush-mounted installation – for a modern kitchen design



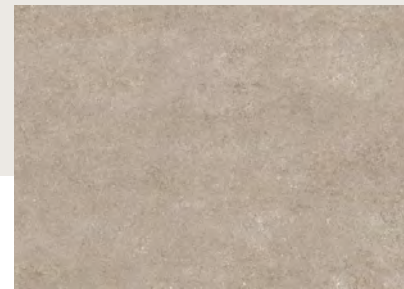
WORKTOP DÉCOR 781
Venato Bianco reproduction

White marble that perfectly matches the new Easytouch in white.
—
16 mm



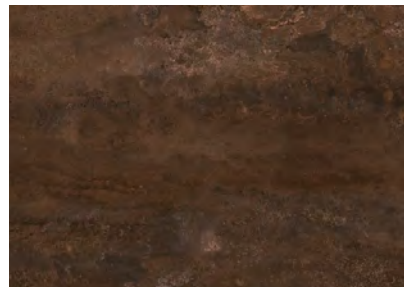
WORKTOP DÉCOR 783
Venato Nero reproduction

Dark marble, which is able to be planned as a contrast or elegant tone-in-tone for black surfaces.
—
16 mm



WORKTOP DÉCOR 784
Fossil grey

The bright stone décor Fossil grey makes a great combination with wooden patterns.
—
16 mm



WORKTOP DÉCOR 785
Metal Oxid

Seems like slightly oxidised metal, but it is super easy to care for.
—
16 mm



WORKTOP DÉCOR 787
Stone Oak reproduction

A warm wooden look that matches Oak Sierra with all of the quality characteristics of a ceramic worktop.
—
16 mm

Everything from one source!

This basic principle also applies to the Xtra Ceramic worktop. Worktops and niches are supplied in a single process along with the entire consignment within the standard delivery time. One order. One delivery!

INNOVATIVE CONSTRUCTION IN THREE LAYERS

The 6 mm ceramic layer is followed by a 10 mm lightweight carrier layer comprising recycled old glass and a third layer made of fibreglass as a stabilising layer. The innovative edge protects against damage and protects the ceramic against chipping.



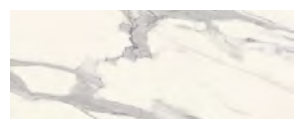
NEW SURROUNDING COLOURS



UPRIGHT PANEL COLOURS



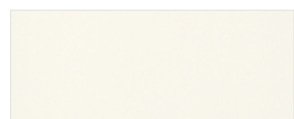
UPRIGHT PANEL COLOUR 231
Bergamo oak reproduction



UPRIGHT PANEL COLOUR 235
Venato Bianco marble reproduction



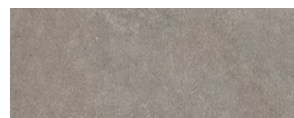
UPRIGHT PANEL COLOUR 778
Lacquered laminate, fjord blue



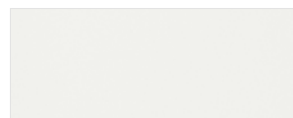
UPRIGHT PANEL COLOUR 968
Lacquered laminate, white ultramatt



UPRIGHT PANEL COLOUR 970
Lacquered laminate, taupe grey ultramatt



UPRIGHT PANEL COLOUR 363
Taupe grey basalt reproduction

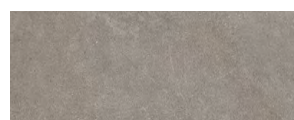


UPRIGHT PANEL COLOUR 488
Lacquer, premium honed white

PLINTH COLOURS



PLINTH COLOUR 231
Bergamo oak reproduction



PLINTH COLOUR 363
Taupe grey basalt reproduction

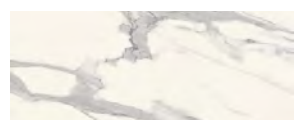


PLINTH COLOUR 071
Taupe grey

SHELF UNIT COLOURS



SHELF UNIT COLOUR 231
Bergamo oak reproduction

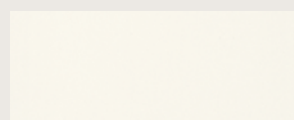


SHELF UNIT COLOUR 235
Venato Bianco marble reproduction

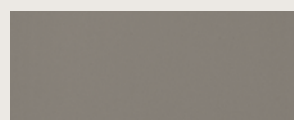


SHELF UNIT COLOUR 212
Lacquered laminate, fjord blue

BEVELLED SHELF UNIT COLOURS



BEVELLED SHELF UNIT COLOUR 968
Lacquered laminate, white ultramatt



BEVELLED SHELF UNIT COLOUR 970
Lacquered laminate, taupe grey ultramatt

NICHE CLADDING

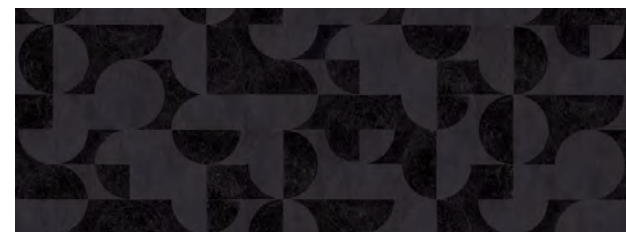
Innovative digital printing enables the special depth effect of our new NVM pattern.



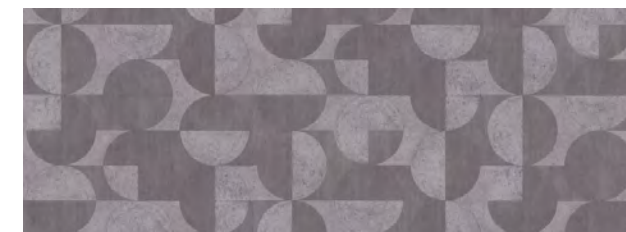
NVM 291 Décor Metro White
A clean and contemporary look that adds a slightly industrial touch. The perfect design element for modern kitchen designs.



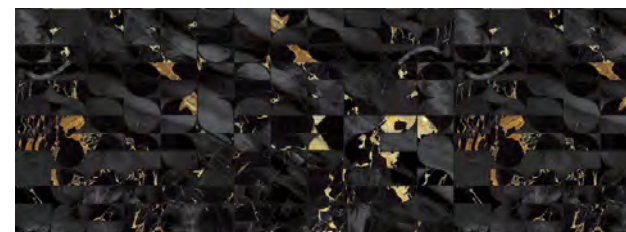
NVM 292 Décor Metro Black
A statement in the trendy colour black, which doesn't just strongly highlight the niche. Ideal as a contrasting program, as well as tone-in-tone.



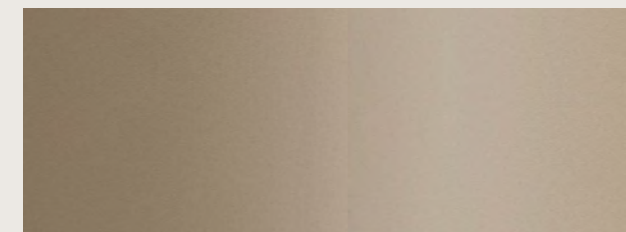
NVM 294 Décor Circle black
The cool look with tangible matt-gloss effect sets accents, but also works in a monochrome environment. By the way: Easy to clean in spite of the texture.



NVM 295 Décor Circle taupe grey
The trendy colour taupe grey harmonises as a wallpaper, furniture element or accessory in any form, stylishly together with our patterned taupe grey Circle.



NVM 293 Décor Golden Art
Luxurious and expressive – the stone texture in black and gold adds a touch of Art Deco to any room. Very unique!



NVK 296 Yellow gold coloured
This gold appearance is created on the basis of an HPL material with an integrated real metal foil. A stylish effect that combines wonderfully with gold-coloured accessories.



NEW GRID. INDIVIDUAL DESIGN WITHOUT LIMITS.

The 2023 nobilia grid system represents design-oriented kitchen design, customised storage space planning, ergonomically adapted active work heights and perfect line designs with absolute planning reliability. All of this lets our new grid create the perfect connection between the central dimensions of everyday kitchen work.

ADVANTAGES WITHOUT LIMITS

- Logical and continuous product module kit
- Uniform, harmonious lines
- Simple planning, even if changes are made at a later point
- Individual design without limits, even without special production
- Optimised use of storage space
- Flexible kitchen design
- Multifunctional use of units thanks to symmetrical heights
- Perfect fit for electric appliances
- Uniform lines on modern fronts and in cottage style kitchens
- A simple abbreviation code enables quickly changing between the heights

n144
the living system

DESIGNED TO FIT PERFECTLY

Our harmonised planning grid makes it even easier to plan nobilia kitchen, bathroom and living room spaces even more customised, continuous, and cleanly. The clean lines can even continue to other rooms such as the adjacent living and dining areas, or even the bathroom, utility room or pantry.



THE MEASURE OF ALL THINGS IS 144!

READY TO CREATE! WITH THE nobilia GRID.

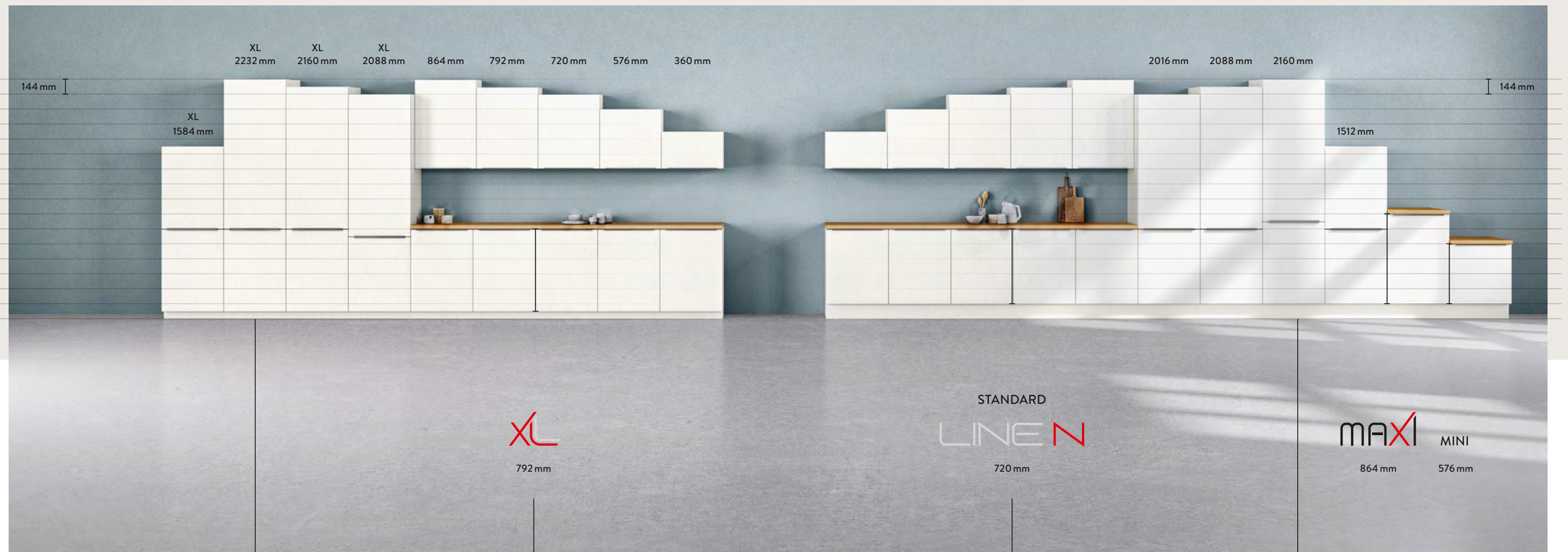
With our 2023 collection, we offer you a comprehensive set of product modules that offer unlimited planning variety. The logical structure, unified grid dimensions and the continuous assortment of units make planning easy. Let your imagination run wild. Or according to our trade fair motto: Ready to create!

n144
the living system

INDIVIDUALISM ACCORDING TO PLAN

Everything is possible! We offer the perfect kitchen solution for every individual need and every room with

- 3 base unit heights in standard, XL and Maxi height
- Base units in Mini height and special units offer additional room
- 5 wall unit heights
- 8 tall unit heights
- 3 dresser unit heights
- 3 worktop thickness sizes
- 4 variable plinth heights



The consistency of the cabinet lines continues from the smallest tall unit height 1512 mm up to the largest tall unit 2232 mm, independent of whether the standard height 720 mm or as here the XL height 792 mm is selected.

Our XL height can be planned in an integrated manner. This allows kitchens to be planned not only ergonomically, but also optimised for storage space. At a comparable height, XL offers around 10% more storage.

Our base unit heights offer various options for individual adaptation of a kitchen to ergonomic and storage space considerations. To ensure it works, three heights, Standard, XL and Maxi, are available in a comparable type spectrum.

Our planning goes down to the smallest details of continuous line layout. This symmetry is made possible by the upright, panel, and dresser units, which are adjusted directly to the carcass height of the base units.

MORE SOPHISTICATED

We think uniformly with all developments. Our final grid transition therefore makes not only many individual product additions possible, it also represents perfectly adjusted working heights, a harmonised, design-oriented storage room concept, and endless options for personalised kitchen designs.



HARMONY AND CALM SURFACES

Customers appreciate the value of a modern design and understand visual perfection down to the smallest detail. A unified line layout not only harmonises, it also ensures a perfect kitchen concept, particularly for large-format front solutions.



FLEXIBLE HEIGHT SYSTEM

Every individual is unique and therefore requires a worktop height adapted to their needs. Our system is designed to permit ergonomic adaptation of working heights and individual storage space designs in a grid of 144 mm. In combination with different worktop thickness and plinth heights, any planning is therefore able to be aligned with the needs of customers flexibly.

N144.

ONE SMALL DIMENSION - A BIG EFFECT

To optimise kitchen storage, you need space and structure. That's why our perfectly proportioned drawers are the measure of all things: 144 mm height guarantees plenty of storage space and elegant lines. Even large kitchen utensils like soup ladles and egg whisks are at home here.



PERFECTLY INTEGRATED

Thanks to grid dimensions of 144, built-in appliances can be installed elegantly.

NEWS FROM THE KITCHEN

New planning and design options, as well inspiring ideas now add even more character and convenience to any kitchen.

01.

—
RIVA 843
Bergamo oak
reproduction

—
See pg. 6

02.

—
Worktop décor 363
Taupe grey basalt
reproduction (Xtra)

—
See pg. 21

03.

—
iLAND
LED ceiling lamp

—
See pg. 37

04.

—
Ceiling height LINE N
planning with
continuous
recessed handle

—
See pg. 34

05.

—
EASYTOUCH 970
Lacquered laminate,
taupe grey ultramatt

—
See pg. 12



NEW RELEASES

LINE N Ceiling-height designs with continuous recessed handle

LINE N tall units with vertical recessed handles are extended upwards with our new NAHS* dresser units. The recessed handle is delivered up to 3000 mm long in a single profile.



NAHS* Dresser units

For mounting on tall units with vertical recessed handle, 1 door

Available widths:
300, 400, 500, 600 mm
Available heights:
288, 360, 432, 504, 576, 648,
720 mm
Maximum recessed handle
length: 3000 mm

W*-58 New wall unit height 576 mm tall

Optimised for relaxed residential planning, the new 576 mm wall unit height ensures storage possibilities can be planned in even small spaces with angled ceilings.

Available range of units:

- Single-door wall units
- Climber wall unit
- Wall corner unit
- Shelf units



WB 16* Wall-mounted shelves

16 mm thick, 150 mm deep, carcass material, polymer edging all around, including metal plug fitting

Available in all carcass colours.
Available widths: 300 to 1200 mm

Width-extensions for wall-mounted shelf WB25*

3 new widths: 550, 700, and 1100 mm



WB16* Bevelled plug-in wall shelf

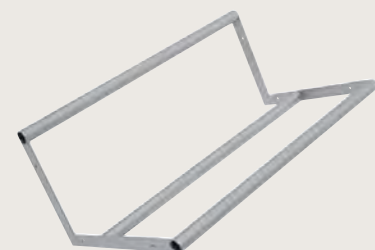
16 mm thick, 150 mm deep, with surrounding polymer edge, bevelled front, including metal plug fitting

Available for delivery in all carcass colours and Easytouch front colours.
Available widths: 300 to 1200 mm.



H(D)GTK* / NMSGTK* Tall unit for drink crates

Finally space for bulky drink crates. This design makes it possible to store crates on the backward-sloping holders, making the bottles easy to see and remove. The tall unit is 600 mm wide and offers three holders for different cabinets. Each fixture can bear loads of up to 35 kg, so depending on the crate size, it is possible to store up to two crates per holder. The holder is also available individually as an accessory.



TGTK Holder for drink crates

Suitable for 561 mm deep base units and tall units 600 mm wide with minimum front heights of 645 mm. Each additional carrier requires 450 mm space. Maximum three carriers per unit are possible.



NEW KITCHEN RELEASES



GBOX Gardening Box

—
Healthy, fresh and regional food are a matter of sustainability in the kitchen. Our new Gardening Box now makes your own growing possible on a small scale. And here's how it works: The Gardening Box contains 4 bowls for seed mats for mini vegetables and herbs. Water, close the box, and the growing process starts. Integrated plant lights and ventilation control the day and night cycle. Depending on the plant type, the growth phase is between 7–10 days and can even be tracked using an app. By the way: We only use organic seed from Germany.

—
The Gardening Box can be used in 600 mm wide pull-out cabinets.



LB-ARW* Black rear wall gap cover

—
In order to create a unified look below the wall units, we add a cover rail that conceals the rear wall gap. The fine perforated metal also ensures the required air circulation.

—
Available in:
106 white
010 black
014 stainless steel appearance

Available in widths from 300 to 1200 mm.



LNARW* LED niche light for covering the rear wall gap

—
Narrow, fine, and elegant. This new form of lighting is applied inconspicuously in the rear wall gap. Thanks to a special lighting technology, the small light band illuminates the entire worktop.

—
Aluminium profile with integrated LED light strip,
LED – 12 V DC, 2700 – 6500 K
2000 mm connection cable for start set
for mounting beneath wall units
Energy efficiency class: F / protection class IP 44

Available in: 014 stainless steel appearance and
010 black
Available in widths from 300 to 1200 mm.

LIGHTING



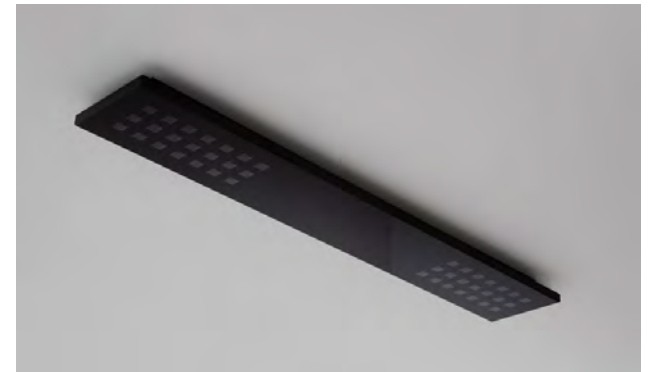
iLAND LED ceiling lamp

—
Aluminium profile, powder-coated sheet metal, printed tempered safety glass viewing covering, 1 indirect ambient lighting via ceiling reflection, 1 direct glare-free, balanced lighting, comprising a combination of lenses and mini-reflectors

—
LED – 52 Watt, 2700 – 6500 K
infinitely adjustable colour temperature from warm white to cold white,
1 radio remote control,
1 connection cable / 240 V
For ceiling assembly above kitchen islands
Energy efficiency class: F

Available in: 010 black and 106 white

Innovative light solution for downdraft extractor fans. The iLAND ceiling light is attractive not only because of its design, it combines optics and mini-reflectors to unify both direct and indirect lighting. The indirect lighting component creates soft, ambient light. The direct light component illuminates the work surface of the kitchen island evenly, brightly and without glare. Both lighting components are able to be controlled and dimmed independently of each other, and the colour temperature may also be set.



LNUDL LED niche light UDL

—
The black built-under light is equipped with the newest lens technology and results in broadly covering and homogeneous illumination of the worktop.

—
Case aluminium with glare-free, balanced lighting, consisting of a combination of optics and mini-reflectors, LED – 9.4 W / 12 V DC, 2700 – 6500 K
2000 mm connection cable for start set
for mounting beneath wall units
Energy efficiency class: F

Available in: 014 stainless steel appearance and 010 black



BLACK EDITION

black
edition

Pure black is and remains a design statement. Especially as a monochrome design concept in the kitchen. Fronts, carcasses, and worktops form the basis of the black complete look, and this year, new details in black like roll-up fronts and matt glass fronts, electrical equipment, sinks, fittings, and accessories expand the product range.



AJG* Transition of roll-up units with black glass

More black! All dresser units with glass roll-up fronts in black glass no. 39 will be transitioned on specific dates to black blind frames, bar handles and power outlets. This means our roll-up units will receive a modern, consistent black look.

The designs in 01 clear glass and 02 matt glass continue to be available in the familiar design with stainless steel finish blind frames.



Flat 440 aluminium framed door in black with black glass matt 48

Cool and very modern! Our Flat designer glass front has been expanded with the combination of black aluminium frames and trendy black matt glass. This glass enables, for example, in combination with Easytouch in graphite black, monochrome planning in a completely black matt design.



BE*BE Plastic cutlery tray "Black Edition"

Generous storage, plus design. The cutlery tray surrounds the frame for a completely all-in-black look. Practical: the non-slip softtouch surface.

Available in widths from 300 to 1200 mm. Matching with drawers featuring a side depth of 561 mm.



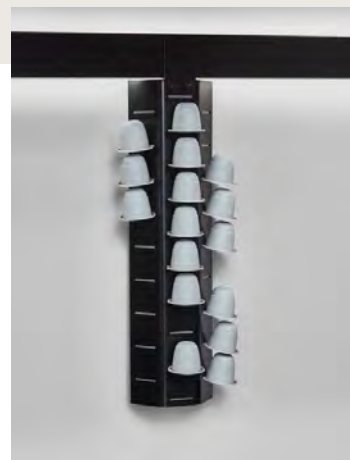
BE-M60N / BE-GMS60N / BE-MVGS*N Wooden cutlery tray in black ash

Makeover of the black wooden cutlery tray made of ash for the "Black Edition".

- Black stainless steel knives
- Non-slip storage containers made of black plastic with practical viewing window
- Spice mills and spice shakers with black coverings

BEAUTIFUL AND TIDY

Update to our exclusive success model! The modular railing system Sign Emotion is now more attractive thanks to new options and additions for kitchens, bathrooms and living rooms. This flexible jack-of-all-trades in aluminium with a black or stainless steel appearance offers not only endless possibilities for individual planning, it also unifies design and storage in an unmistakable way. Good innovations: smart add-ons like capsule holders, an eyeglasses holder, and dual power outlet, as well as attractively designed accessories.



SEKKH
Sign Emotion capsule holder

For tidy storage of coffee capsules. 3 rows offer space for a total of 28 capsules.

Available in 014 stainless steel appearance and 010 black.



SESTD*
Sign Emotion dual power outlet with USB charger

With touch protection and integrated USB charging device for all conventional smartphones and tablets. Black plastic housing with aluminium panel in stainless steel appearance or black. Charging device: 2 × USB 5 V / 2 A (10 W) and 1 × USB-C 5 V / 1.5 A (7.5 W) Protection class IP 44

Available in 014 stainless steel appearance and 010 black.



SEKTA
Small item tray Sign Emotion

Practical for eyeglasses and other details.

Width: 160 mm
Height: 300 mm
Depth: 90 mm

Available in 014 stainless steel appearance and 010 black.



SERSP
Sign Emotion aluminium shelf unit with mirror and LED lighting

Sign Emotion also receives a clever facelift in the bathroom. Multi-functional addition: The new Sign Emotion LED mirror with dual power outlet featuring touch protection, a USB charging function and 2 drawer inserts, solid oak design. This mirror controls the transformer and switching function of the Sign Emotion profile.

Width: 600 mm, Height: 864 mm, Depth: 150 mm
Charging device: 2 × USB 5 V / 2 A (10 W) and 1 × USB-C 5 V / 1.5 A (7.5 W), protection class IP 44
LED – 12.48 W, 2700 – 6500 K, 3 Emotion touch dimmers, 1 LED converter 60 W / 12 V DC IP 44 with 6-outlet power bar and 1100 mm connection cable

The mirror serves simultaneously as the start set for the LED light design of the Sign Emotion aluminium profile (MP-SEL).

ELECTRIC APPLIANCES

Brand new! Special focus of our 2023 collection is placed on our attractive, and above all available, assortment of appliances. With that in mind, we already added the Bauknecht brand to our complete marketing programme in March, 2022. With Grundig, Laurus and Whirlpool, our appliance range has once again been expanded with more brands in all price segments.



Für mich und mein Zuhause

BAUKNECHT

Since March, 2022, 32 devices of the German traditional brand Bauknecht are included in our assortment. All products are attractive thanks to their reliable quality, high-quality materials and extraordinarily high performance.



GRUNDIG

Quality, design and innovation! We've expanded our range with 15 built-in appliances from Beko Grundig. This brand continues to set new standards and represents a comprehensive approach: Grundig products work as sustainably as possible, promote a healthy lifestyle and meet even the most stringent demands for quality and aesthetic appeal at the same time. Awarded numerous prizes in the area of sustainability.

For all Grundig devices in the nobilia range, we offer a 3-year manufacturer guarantee in Germany.

The appliances in the "Edition" series – Edition75VIKM (80710) and Edition75 (80018) – also include an extended guarantee period of 5 years.



LAURUS

The new nobilia exclusive brand from Vestel forms out new entry price level. The extensive and contemporary assortment consists of 34 models.



WHIRLPOOL

Innovative and award-winning products in top quality. 35 built-in appliances from Whirlpool enhance our overall range. The strong, global brand stands for beauty in design and performance. Typical: the focus on intuitive operation (6th Sense controls).

SAMSUNG

SAMSUNG

High-performance, when warranty services are involved. All Samsung appliances in the full nobilia range include a Samsung guarantee of 5 years.



BORA

Exclusive GP4U downdraft extractor fan

Makeover of a successful model: the exclusive BORA GP4U downdraft extractor fan now features a purist, elegant design. A new form design with proven advantages like the tailor-made cabinet solution, ideal storage utilisation of the drawer under the hot plate and simple and easy assembly.



JUNKER

nobilium exclusive brand

New design for 2023! Design update for our exclusive BSH brand Junker (ovens, hot plates) – elegant, purist, matching any kitchen plan. Now also in attractive black, plus a facelift for the stove top and oven, e.g. with a newly designed print for glass ceramic hot plates.





BOSCH
Sally edition

The exclusive Sally edition is only available from nobilia. These are an appealing addition to our appliance portfolio that can be marketed exclusively with special focus on the end consumer.



SIEMENS

An exclusive series from Siemens, which is only available in the complete range from nobilia.



HBG5780B6
Built-in oven

- 9 types of heating
- Self-cleaning / pyrolysis®
- High-speed heating
- 1 telescopic pull-out
- Home Connect



HBG7742B1
Built-in oven

- 14 types of heating
- Self-cleaning / pyrolysis®
- High-speed heating
- Home Connect
- Digital control ring



PVS63KBB5E
Ceramic glass hot plate

- 17 power levels
- PowerBoost function
- Pan sensor
- Cooking zone timer
- Combination zone



DWB67IM50
Chimney hood

- 3 power levels
- TouchControl operation
- Stainless steel metal grease filters
- LED display operation



Extra quiet

LC87KGM60
Chimney hood

- 3 power levels + 1 intensive level
- TouchControl operation
- Intensive level with automatic reset



including pyrolysis system

HB776G3B2S
Built-in oven

- 13 types of heating
- TFT touch display plus
- Oven assistant with voice control
- cookControl Pro



with touchSlider operation

EX851FVC1E
Ceramic glass hot plate

- 1 large vario induction cooking zone
- 17 power levels including powerBoost function
- 1 large vario induction cooking zone
- Roasting sensor with 4 temperature levels



SMV4ECX26E
Fully integrated dishwasher

- Capacity: 13 place settings
- 6 programs
- Home Connect



SBV4ECX26E
Fully integrated dishwasher

- Capacity: 13 place settings
- 6 programs
- Home Connect



KIR81VFF0
Integrated fridge

- Volume: 319 litres
- 7 glass shelves
- 6 door trays
- MultiBox XXL



81.5 cm
Installation height

SN75ZX48CE
Fully integrated dishwasher

- Appliance height 81.5 cm
- Capacity: 14 place settings
- Home Connect-compatible via WLAN



86.5 cm
Installation height

SX75ZX48CE
Fully integrated dishwasher

- XXL appliance height 86.5 cm for high built-in kitchens
- Capacity: 14 place settings
- Home Connect-compatible via WLAN

BUILT-IN SINKS

We have the right sink for every kitchen and every individual need. Different sink sizes guarantee maximum flexibility for planning. For the materials, we focus on the characteristic qualities of stainless steel and granite. For all sinks in our assortment, we produce the sink cut-out upon request. This saves installation time and cost.



RODI
Built-in sink Una 34 N, stainless steel

- 1 sink 340 × 380 × 200 mm
- Flush-mounted installation possible
- Sink units upwards of 400 mm / SL 450 mm



RODI
Built-in sink Una 36 N, stainless steel

- 1 sink 340 × 380 × 200 mm
- Flush-mounted installation possible
- Sink units upwards of 400 mm / SL 450 mm



TEKA
Built-in sink Princess 50, stainless steel

- 1 sink 420 × 340 × 150 mm / 1 drip tray
- Reversible
- Sink units upwards of 600 mm / SL 1000 mm



TEKA
Built-in sink Princess 60, stainless steel

- 1 sink 420 × 340 × 150 mm
- 1 waste sink 180 × 280 × 120 mm
- Drip tray
- Reversible
- Sink units upwards of 600 mm / SL 1000 mm



RODI
Built-in sink Una 73 N, stainless steel

- 1 sink 500 × 380 × 200 mm
- 1 waste sink 180 × 380 × 150 mm
- Flush-mounted installation possible
- Sink units upwards of 800 mm / SL 800 mm



RODI
Built-in sink Una 72 N, stainless steel

- 1 sink 500 × 380 × 200 mm
- 1 waste sink 180 × 380 × 150 mm
- Flush-mounted installation possible
- Sink units upwards of 800 mm / SL 900 mm



TEKA
Built-in sink Flexlinea, stainless steel

- 1 sink 500 × 400 × 200 mm
- Flush-mounted installation possible
- Sink units upwards of 600 mm / SL 800 mm



TEKA
Built-in sink Centroval, stainless steel

- 1 round basin 390 mm, 180 mm deep
- Sink units upwards of 450 mm



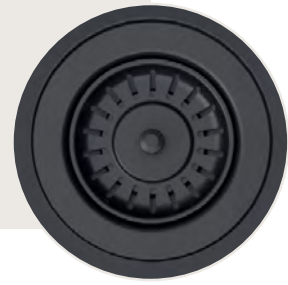
RODI
Built-in sink Una B40 N, stainless steel

- 1 sink 400 × 380 × 200 mm / drip tray
- Flush-mounted installation possible
- Reversible
- Sink units upwards of 600 mm / SL 1200 mm

GRANITE SINKS

ELLECI
Flat built-in sink series

—
Now also fully available in trendy black matt – including accessories like drains and overflows.

**ELLECI**
Built-in sink Flat 105 made of KERATEK®PLUS black

- 1 sink 500 × 400 × 200 mm
- Sink units upwards of 600 mm / SL 800 mm

**ELLECI**
Built-in sink Flat 105 made of KERATEK®PLUS black

- 1 sink 380 × 435 × 200 mm / 1 drip tray
- Reversible
- Sink units upwards of 500 mm / SL 900 mm

**ELLECI**
Built-in sink Flat 480 made of KERATEK®PLUS black

- 1 sink 480 × 435 × 200 mm / 1 drip tray
- Reversible
- Sink units upwards of 600 mm / SL 1200 mm

**ELLECI**
Built-in sink Best 360 made of KERATEK®PLUS, workstation with accessories

- 1 sink 796 × 320 × 200 mm
- Including accessories: 1 roll-up matt, 1 dish drainer, 1 vegetable tray

—
This item is available exclusively from nobilia.



GRANITE SINKS

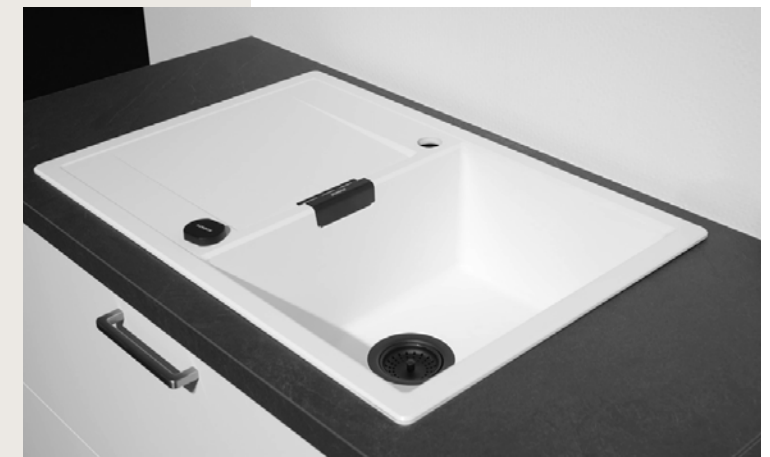
FRANKE
Built-in sink Sirius S2D 611-100, made of Tectonite

- 1 sink 450 × 432 × 200 mm / drip tray
- Reversible
- Sink units upwards of 600 mm / SL 1200 mm

—
Available in Carbon, Urban Grey and Blanc Arctic.

**SCHOCK**
CRISTADUR® Green Line

—
Sustainable, climate-neutral and handmade in Germany. These premium sinks consist of up to 99% natural or recycled materials like natural quartz sand. Specially developed for kitchen needs and especially tough.

**SCHOCK series Mono in the material CRISTADUR® Green Line**

—
Strong character with new, accessories in black. A successful contrast against the Mono series.

—
Available in Day Greenline and Night Greenline.



TAPS



KLUDI
Mix series

—
In the variants high-pressure tap, low-pressure tap and high-pressure tap with spray head.
Available in: black matt, chrome



Also available as
high-pressure single-lever mixing tap MIX bayonet for installation beneath the window
Available in: chrome



GROHE
Blue Home water system

—
New! Now complemented with the colour variation matt black for the Black Edition. In the variations L spout and L spout plus spray head.



TAPS



GESSI
High-pressure single-lever mixing tap STALIA, stainless steel (solid)

- · Connection for warm and cold water
· Swivelling spout, swivel range 360°

Also available as
GESSI
High-pressure single-lever mixing tap STALIA with spray head



GESSI
High-pressure single-lever mixing tap DELIA, yellow gold coloured

- · Connection for warm and cold water
· Swivelling spout, swivel range 360°

Also available as
GESSI
High-pressure single-lever mixing tap DELIA with spray head



GESSI
High pressure single lever mixing tap DELIA SEMI-PRO

- Pull-out swivel spout, swivel range 360°
Available in: chrome, black matt



GESSI
High-pressure single-lever mixing tap ALILA

—
Available in: chrome, stainless steel appearance, black matt, gold-coloured

Transition of all variants to manufacturer label

NEW LIVING IDEAS

Our living assortment has been developed further in many facets for 2023.
Contemporary individualism, personal lifestyle and convenience are our standards in this case.
Cosy living is our special expertise!

01.
—
EASYTOUCH 970
Lacquered laminate,
Taupe grey ultramatt
—
See pg. 12

02.
—
Glass cabinets
—
See pg. 57

03.
—
Media panel and
media console
—
See pg. 54

04.
—
Coffee table Dublin
—
See pg. 58



MEDIA FURNITURE WITH A SYSTEM

Modern media technology, especially televisions or sound bars, are usually an important hub in the living room. With our new media furniture, we offer a series of more attractive and practical solutions, cable management included.



MEDIPAN160 / 200 Media panel

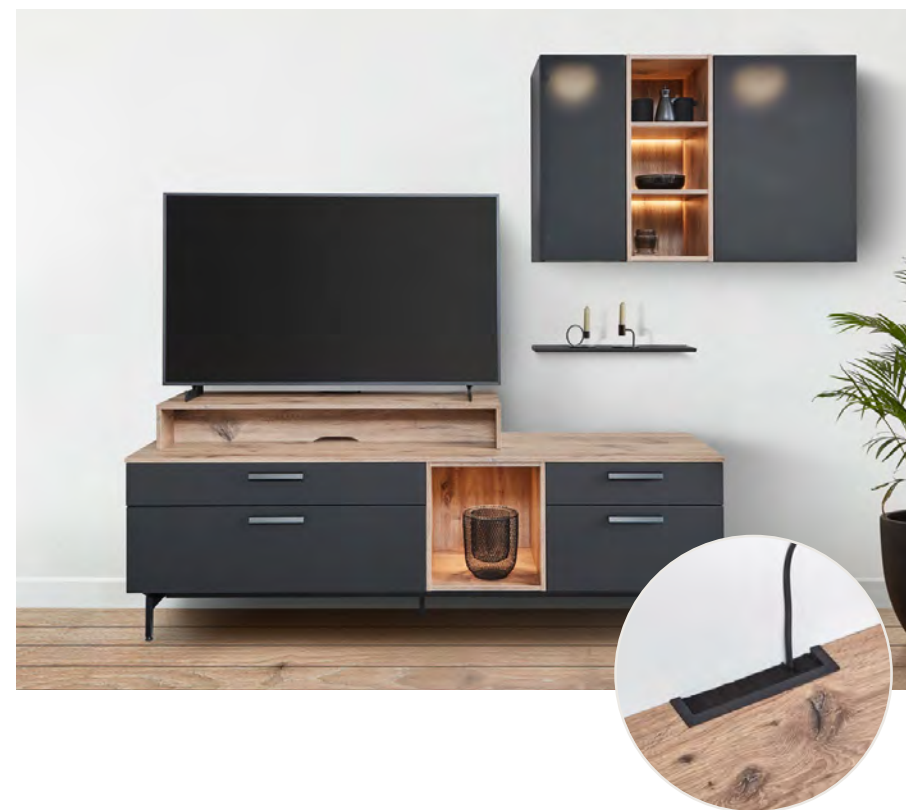
For planning with the MEDIKON* media console coated on both faces, 16 mm thick, horizontal texture alignment, surrounding polymer edge, lower construction for TV, cable management via spacer frame, black, 39 mm thick

The media panel is also optionally available with the LED design MP-MEDIPL. Available in all carcass colours, cable feed-through in 010 black or 014 stainless steel appearance.

MEDIKON160 / 200 L/R Media console

For planning with base units in 432 mm carcass height + 20 mm plinth MP-SOWR and 16 mm top shelf ADB16*
Depth: 371 mm, Height: 662 mm
Total width: 1600, 2000 mm
support 500 mm width (left or right),
1 glass shelf 6 mm thick,
1 cable feed-through, rectangular, in upper shelf,
1 cable feed-through, round, in back panel

Available in all carcass colours, cable feed-through in 010 black or 014 stainless steel appearance.



MEDIBRIDGE Media bridge

Practical TV riser and extra storage option for receiver, sound bar, and more. MEDIBRIDGE offers more integrated cable management on base units: thanks to cable feed-throughs in the back panel and in the top shelf, cables disappear behind the floating back panel.

- Compartment height: 144 mm (back panel floats 284 mm)
- TV mount on base units.
- Cable management behind the back panel.
- 1 cable feed-through, rectangular, in the top shelf.
- Cable feed-through in 010 black or 014 stainless steel appearance.

Available in all carcass colours.

SOFG*-35 / -46 Plinth foot mount

The black steel plinth foot mount is a typical trend feature in contemporary living room designs and gives furniture a light-weight, floating look. Important for assembly: mount the carcass on the plinth first, then secure it to the wall with a safety bracket.

Steel plinth foot frame SOFG*-35 / -46 for planning under base units and sideboards in 350 and 461 mm side depth
Height: 169 mm
Height adjustment 0 / +10 mm

Available for following carcass widths:
800, 1200, 1600, 1800, 2000, 2400 mm
Starting at 1600 mm width with visible centre leg

Available in: 010 black



BEHS*-46E Wooden segment cutlery tray made of oak

Solid wood design in oak with anti-slip mat in anthracite

Height: 55 mm
Segment width: 274 mm
New in side depth 461 mm and therefore matching for living room furniture planning.

NEW LIVING AREA IDEAS

New perspectives! Our bevelled upright panels and modern living cabinets are the new highlights in the living area – especially attractive with integrated lighting.



WAF(B)16* Bevelled upright panels

Our new upright panel assortment matches the bevelled shelf unit in all carcass colours and is available of the Easytouch front colours. The bevelled upright panels are 16 mm thick and result in an especially fine frame look combined with our 10 mm thick top shelves thanks to the lightly projecting fronts.

Available heights: 288, 360, 432, 554, 576, 630, 720, 864, 1152, 1247, 1296, 1584, 2016 mm
available depths: 384, 495, 595 mm



W*-58 New wall unit height 576 mm height

In the new wall unit height: 576 mm, single-door hinged door cabinets and shelves are available. This height is ideal for relaxed home planning and implementation of angular arrangements.



Showcase storage room individually

Our modern versions of the glass cabinet offer plenty of space and perfectly showcase your favourite pieces at the same time. The range is contemporary, able to be combined flexibly and unifies storage with a special design. Glass is a design element that offers more lightness and lends itself harmonically to every living plan.

Our planning example shows a highboard set consisting of two end-of-run boulevard glass cabinets with glass corners on the outside and a glass cabinet with black glass in the centre.

Glass cabinets

Our successful boulevard and segment glass wall units have been expanded for 2023 with a complete glass cabinet program. Three basic types are available for selection: The solitary glass cabinet with glass cut-outs on both sides offer aesthetic perspectives thanks to the glass insert, which can be viewed from three sides. The finishing glass cabinet with a glass cut-out on one side is perfect for finishing solutions. To plan the centre, we've designed glass cabinets and wall cabinets with a glass cut-out in the front. Good to know – when planning end-of-run glass cabinets, please indicate the glass cut-out side during ordering.

Glass variations available:
01 clear glass, 02 matt glass, 39 black glass
Available widths: 450 mm / 500 mm / 600 mm
Height, width and depth reductions are not permitted!

Depending on the height, available in wall-hanging and floor-standing designs:

- Floor-standing design:
Glass cabinet including plinth foot set MP-SOWR, 20 mm tall
Total height: 2036 mm
- Wall-hanging design:
Glass cabinet, 1296 mm tall with different door divisions
Wall unit glass cabinets in the wall unit heights
720, 792, 864, 1296 mm



COFFEE TABLE COLLECTION

New to the assortment! For the first time, we present coffee tables – matching our geometries, materials and patterns for complete living room design. Three light and mobile variants are available for selection: low or at a comfortable height, on rollers, adjusted to our bevelled shelves or with an elegant metal frame.

Depending on the model, our tables are available with different tabletop thickness and a large variety of décors. The modern and uncomplicated design unifies storage room and style.



CT-DUB 16/25/50*

Coffee table Dublin

Minimalist, pure and linear – the ideal coffee table for a modern feeling. The basis is formed by a frame consisting of powdered steel, including gliders and individual tabletops in upright panel and top shelf colours.

—
1 table frame, powdered steel, including gliders,
1 top shelf,
depending on table design 16 mm, 25 mm
or 50 mm stark

Table dimensions: 1200 × 800 mm and 800 × 800 mm
Table heights depending on surface thickness
CT-DUB16*: 307 mm
CT-DUB25*: 316 mm
CT-DUB50*: 341 mm

Frame colours available: 010 black



CT-DEN*

Denver bevelled coffee table

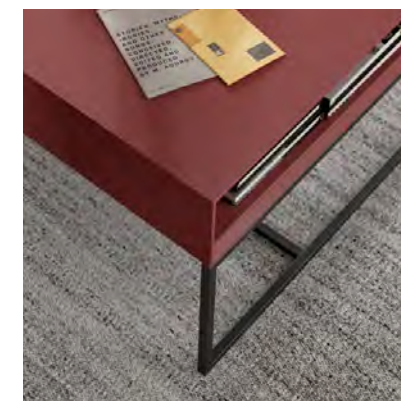
This mobile coffee table is able to be positioned flexibly thanks to rollers and offers additional storage room.

—
Including furniture rollers
Table dimensions: 1200 × 800 mm and
800 × 800 mm
Table height: 336 mm

Available in all carcass colours (PG 1)
and all front colours from the
Easytouch 945 range (PG 4).

Bevelled coffee tables

Perfect for everyone who loves beautiful things. The complete design style appears modern and comfortable simultaneously. Available in all carcass and front colours from the Easytouch range.



CT-DET*

Detroit bevelled coffee table

Pure design! A beautiful design enriches any space. Table frame consisting of powdered black steel.

—
1 table frame, powdered steel, including gliders,
1 bevelled top shelf
Table dimensions: 1200 × 800 mm and
800 × 800 mm
Table height: 435 mm

Available frame colour: 010 black
Available in all carcass colours (PG 1)
and all front colours from the
Easytouch 945 range (PG 4).



WARDROBE ATTACHMENT ELEMENTS

Easily expandable. Our new attachment elements now enlarge any wardrobe unit completely individually. The elements are available in all standard shelf colours and in all tall unit heights and each comprise two upright panels and one top shelf, plus the corresponding accessories. The associated panel shoe is available in the colours 010 black and 014 stainless steel appearance.



4 additional basic types

1. HWGA20*

2 fixed clothes rails
above and below
from 600 – 1000 mm
(in cm steps)

2. HWGASHK*

1 fixed clothes rail
1 storage area with
trousers rack
1 tie rack
from 600 – 1000 mm
(in cm steps)

3. HWGALS*

1 clothing lift
1 fixed clothes rail
800 / 1000 mm

4. HWGALHK*

1 clothing lift
1 storage area with
trousers rack
1 tie rack
800 / 1000 mm

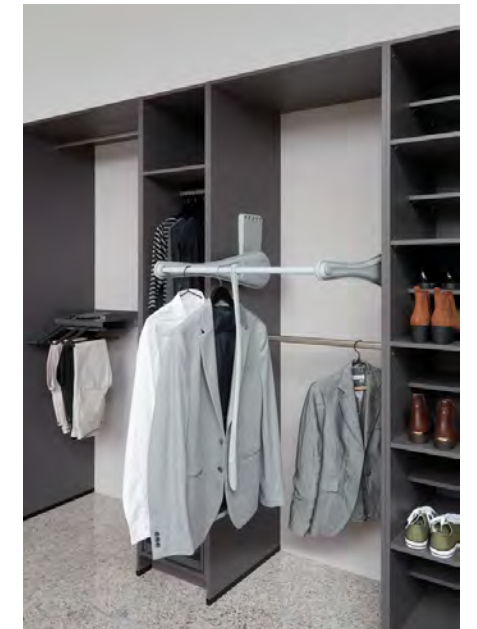
Planning information

- Only able to be planned between wardrobe and shoe cabinets with the same carcass height and back wall connection
- Cannot be planned at the series end with upright panels
- Height and depth reductions are not permitted
- Item delivered disassembled
- If no colour is specified in the order, the upright panel shoe 014 stainless steel appearance will be supplied



Clothing lift

Guarantees convenient removal of clothing especially in case of tall rooms.



Trousers rack with storage area

The trousers rack with storage area has special clothes hangers that may be used in both directions. In addition, a storage area for smaller accessories like watches, for example, is included.



Tie and belt rack

The tie and belt rack can be used for convenient access and a good overview by pulling it out to the front.

BLACK EDITION BATHROOM AND LIVING ROOM

Black means more to us than a trend. Our comprehensively aligned assortment offers exactly what customers desire: plenty of planning options for individual and continuous style in black. Elements like hand basins, the Sign Emotion railing system, lighting objects and of course the framed glass door front Flat round off the complete look.



A PRACTICAL DETAIL!

We've expanded Sign Emotion with a dual power outlet featuring touch protection and an integrated USB charging device, as well as a new storage element for eyeglasses, keys, and even mobile phones and tablets.



BRAND-NEW BATHROOM IDEAS

More comfort and convenience in the bathroom! Beautiful, intelligent solutions are the perfect basis for personalised feel-good designs.

01.

—
EASYTOUCH 968
Lacquered laminate,
white ultramatt

—
See pg.10

02.

—
469 Metal handle
Brushed anthracite

—
See pg.20

03.

—
ERIKA
LED mirror series

—
See pg.70

04.

—
Towel rail
—
See pg.71

05.

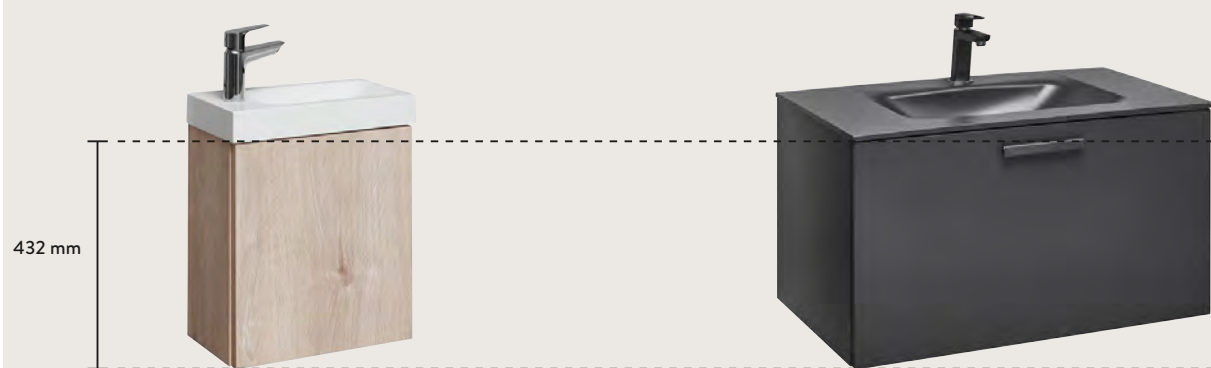
—
Washing machine
housing unit

—
See pg.69



BATHROOM BASICS

Every bathroom is different. Our new grid ensures that our bathroom furniture is now even more flexible to match your individual space requirements and needs. The XL base unit height was completed with front dimension 429. This enables 432 mm tall base units with the matching line layout for our 1296 mm tall occasional furniture.



BWG40-43
Vanity unit for the guest bathroom
in a new base unit height of 432 mm

Beautiful proportions in the guest bathroom, too. Hand basin base unit in the height 432 mm with hinged door for the RonX guest hand basin.

Width: 400 mm

BW* / BU*-43
Bathroom base units and hand basin units in a new
432 mm height

In addition to pull-out cabinets in the new height, base units and vanity units with swivelling doors and shelves are available. The large-format doors create a calm front appearance.

The cabinets are available in widths from 300 to 600 mm.



BM2T* / BMGF* / BMSA* / BM2A* / BMGF2A* / BM3S*-130
occasional furniture at height 1296 mm

Matching with the new front division, these pieces of occasional furniture continue the line layout of the 432 mm tall pull-out and are available in individual designs: with convenient swivelling doors in the original front, pull-outs and drawers, or with the Flat glass front in the top area.

LINE N



LINE N
NBW* / NBU*-63
Base unit 630 mm
with symmetrical pull-out divisions

With LINE N, the 630 mm tall hand basin base unit is now also available with 2 equally large pull-outs. This is perfect for planning and integration with all furniture hand basins in our collection.



LINE N
NBW* / NBU*-43
Bathroom base units and vanity basin units
in a new 432 mm unit height

Popular, modern, plenty of storage space. The hand basin base unit in 432 mm height. Harmonic proportions with distinctive surface calmness.

The cabinets are available in widths from 300 to 600 mm.



LINE N
Additional occasional furniture
1296 mm tall

Clearly, we've developed matching occasional furniture in the height 1296 mm for this front division, too. The unit is also optionally available with a door or pull-out in the lower area.

The cabinets are available in widths from 300 to 600 mm.

432 mm

BATHROOM ADDITIONS

Small details, a big effect. New ideas and accessories now refresh the bathroom assortment. Smart helpers that also appeal aesthetically and can be integrated without much effort.



WAF16*
Bevelled upright panels
—
Give bathroom planning a fine geometrical finish.

STAR
Semi-inset surface-mounted hand basin
—
A new hand basin category in our assortment: Semi-inset surface-mounted hand basins. The model Star in 750 mm width made of Mineral Composite in high-gloss white.

Type addition for the 360 mm height
—
More functionality with less base unit height thanks to 2 symmetrically high drawers.

Practically invisible

For a comprehensive and harmonised look in the bathroom, the washing machine simply disappears perfectly into the housing unit matching the individual planning.



BWSU* Washing machine housing unit 935 mm high

—
2 doors, 861 mm high
1 plinth panel

Dimensions W x H x D: 700 x 935 x 691 mm
Height adjustment: 0/+ 17 mm

The housing unit must be fastened permanently to the wall. Pulling away from the wall is not permitted. Not suitable for dryers. Housing delivered disassembled! Only possible with plinth height 70 mm.



MIRRORS AND ACCESSORIES

Mirrors show new qualities – with integrated lighting or even heating.
Modern wall shelves and simple towel rails set additional accents.



SP-ERIKA* LED mirror series ERIKA

Heated mirror with 3-sided LED lighting.

720 mm tall, 26 mm deep,
3 sand-blasted LED light windows, 18 mm wide,
LED – 12 V DC, 5700 K, protection class IP 44,
1 aluminium frame, 1 touch sensor,
1 connection cable / 230 – 240 V
Energy efficiency rating: F

Available widths:
410, 600, 800, 900, 1000, 1200 mm



SPL-FAC* -58 Mirror with side bevel

The mirror series with side bevel is complemented with the height 576 mm. The visual highlight of the mirror expands the room and is also perfect for bigger plans. Available in a width from 600 mm to 1600 mm.

As optional lighting, we recommend the surface-mounted LED LAPSP (see fig.).

WAF16* Bevelled upright panel

Highlight a fine geometrical design style and available in all carcass colours and front colours of the Easytouch program. The type spectrum is identical with the round upright panels. Planning for bevelled upright panels in the bathroom is only available in combination with panels or attached hand basins. Cannot be planned in connection with furniture hand basins.



WBF16* Bevelled plug-in wall shelf

16 mm thick, 150 mm deep,
surrounding polymer edge,
bevel in front,
including metal plug fitting

Available in all carcass and Easytouch front colours in widths 300 to 1200 mm.



HTHA1 / HTHA2 towel rail

For assembly on the wall or side of the carcass,
1-arm or 2-arm

Available in the colours 010 black,
044 brilliant chrome.



LASOL* LED attachment light SOL

Satin acrylic glass with black LED light profile, for planning on mirror units WBSP* and mirror with side bevel SPL-FAC*

82 mm tall, 120 mm deep,
LED -12 V DC, 2700 – 6500 K
1700 mm connection cable for start set
Energy efficiency rating G / protection class IP 44



HAND BASINS

The next generation is here! Made of innovative cast mineral composite, the new hand basins connect beaming white visuals with high robustness, high scratch resistance and easy cleaning options. The timeless and high-quality design matches any bathroom.



MARMITE
Semi-inset surface-mounted hand basin OVAX 550C
1 basin, mineral composite

White high gloss
536 × 319 × 110 mm,
1 tap hole,
1 overflow
Width: 550 mm
Height: 132 mm



MARMITE
Semi-inset surface-mounted hand basin OVAX 710C
1 basin, mineral composite

White high gloss
689 × 319 × 110 mm,
1 tap hole,
1 overflow
Width: 710 mm
Height: 132 mm



NICOS
Semi-inset surface-mounted hand basin STAR 550
1 basin, mineral composite

White high gloss
534 × 282 × 108 mm,
1 tap hole,
1 overflow
Height: 143 mm



NICOS
Semi-inset surface-mounted washbasin STAR 750
1 basin, mineral composite

White high gloss
734 × 282 × 108 mm,
1 tap hole,
1 overflow
Height: 143 mm

Suitable for mounting in bathroom vanity units BW* / NBW*.

FITTINGS

Not only practical, but rather also timelessly beautiful. The chromed GROHE taps are available with or without a pull-out spout.



GROHE
Hand basin single-lever tap EUROSART M,
High-pressure chromed

- With pull-out rail drain fitting
- Connection for warm and cold water
- Flexible connection hoses
- Height of spout above worktop 121 mm
- 228 mm (highest point above worktop)
- 121 mm spout extension



GROHE
Hand basin single-lever tap EUROSART M,
high-pressure chromed, pull-out

- With pull-out rail drain fitting
- Pull-out spout
- Connection for warm and cold water
- Flexible connection hoses
- Height of spout above worktop 107 mm
- 228 mm (highest point above worktop)
- 122 mm spout extension



GESSI
Hand basin single-lever tap ALILA,
High-pressure chrome / black matt

- Connection for warm and cold water
- Swivelling spout, swivel range 120°
- Aerator with 18 mm diameter
- Flexible connection hoses
- Reinforced panels
- With pop-up drain fitting
- Height of spout above worktop 193 mm
- 258 mm (highest point above worktop)
- 246 mm spout extension

DISCONTINUED 31.12.2022

Handles / décors / units / accessories

DISCONTINUED WORKTOP DÉCOR | UPRIGHT PANELS | NICHE CLADDING



273 Carrara marble reproduction



364 Basalt reproduction
XTRA



394 Champagne travertine reproduction

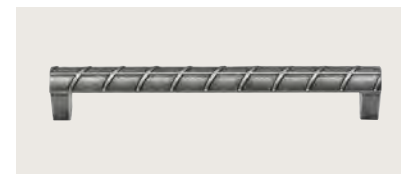
DISCONTINUED HANDLES



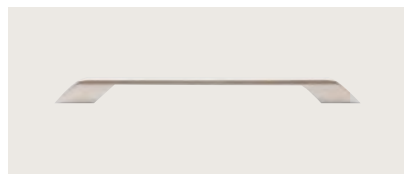
077 METAL HANDLE
Stainless steel finish



088 METAL HANDLE
Brushed anthracite



118 METAL HANDLE
Antique silver colour



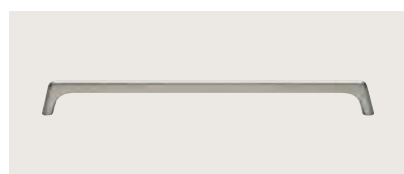
211 BOW HANDLE (MP 7945)
Stainless steel finish



514 BOW HANDLE (MP 7945)
Titanium-coloured



515 BOW HANDLE (MP 7945)
Titanium-coloured



603 METAL HANDLE (MP 7945)
Stainless steel finish

DISCONTINUED UNITS AND ACCESSORIES

DISCONTINUED UNITS

- Highboard height 1485 mm
→ Replaced by new highboard height 1512 mm
- Tall unit height 1, 1997 mm
→ Replaced by new tall unit height 1, 2016 mm
- Tall unit height 1X, 2069 mm
→ Replaced by new tall unit height 1X, 2088 mm
- Niche cladding 519 / 514 mm tall
NV*-52, NVG*-52, NVQ*-52, NVC*-54

DISCONTINUED ACCESSORIES

- Table runner frame ATK78-72, -87, -89
→ Changeover to new depth 805 mm
- Glass panel for room planning
→ Changeover to new depth 805 mm
- Cutlery tray in oak black BE-*M*N
→ Conversion of variants with knife block and / or spice mills in a new design
- Universal organisation in oak black AOSV*N
→ Conversion of variants with knife block and / or spice mills in a new design
- Comfort Spin
- LED lighting / cottage-style lighting set LOLH / LOLH-SET
- LED lighting / super spot lighting set LSUPER / LSUPER-SET
- LED lighting / lighting set Sirio LSIR / LSIR-SET
- LED lighting / lighting set Retangolo I LVR / LVR-SET
- LED lighting / lighting set Retangolo II LNRE / LNRE-SET
- LED niche light Mini-Corner LNC*
- LED niche light Stabi-Line LNSTL* / LNSTL*-E

DISCONTINUED SINKS AND HAND BASINS

- Franke PMX 610 (87001)
- Franke GLN 611 (87011)
- SCHOCK Mono D-100 S Bronze / Polaris (87038, 87310)
- SCHOCK Mono D-100 S FB RD5 Bronze / Polaris (87310, 87466)
- SCHOCK Mono N-100 Small Bronze / Polaris (84787, 87489)
- SCHOCK Mono N-100 Bronze / Polaris (87485, 87483)
- SCHOCK Mono N-100 FB RD5 Bronze / Polaris (87461, 87463)
- SCHOCK Mono D-100 XS Bronze / Polaris (87377, 87379)
- SCHOCK Mono D-100 Large Bronze / Polaris (87492, 87494)
- Elleci Flat 300 black (87675)
- Elleci Flat 480 black (87665)
- Elleci Flat 105 black (87670)
- nobilia: Best 360 Black, Grey, White (87691, 87690, 87692)
→ Changeover to new article number

DISCONTINUED MIXING TAPS

- Gessi Officine stainless steel appearance, Black matt (17726, 17725)
- Gessi Officine with pull-out stainless steel appearance, Black matt (17727, 17728)
- KLUDI L-INES S chromed (17820)
- KLUDI L-INES S with chromed spray head, Black matt, White matt (17816, 17817, 17818)
- nobilia: Alila chromed, stainless steel, black matt, gold-coloured (17801, 17803, 17805, 17807)
→ Changeover to new article number
- nobilia: Kalia chromed, stainless steel (17811, 17813)
→ Changeover to new article number
- nobilia: Alila bathroom chromed, black matt (17730, 17731)
→ Changeover to new article number

